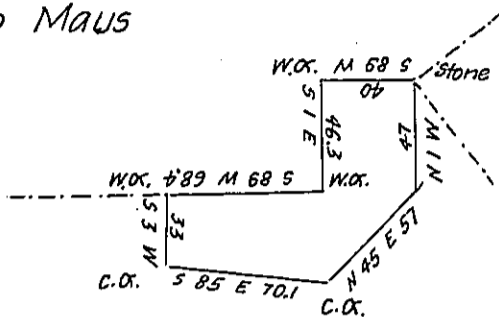


The Heirs of Phillip Maus

Thos^s Chambers Es-
in Right of Jo. M. Donald



Lands Surveyed to W^m Montgomery

The dft. of a tract of land Situate in Columbia County (formerly Northumberland.) in Mahoning Township. Surveyed to Phillip Maus on the 26th day of October 1784 (as by Endorsment on the Warrant) by virtue of his warrant dated July 1st 1784 & Resurveyed by the old lines Jan^y 28th 1842 Containing Thirty Acres and one hundred and twenty nine perches & the usual Allowance

Thos^s Woodside D.S.

To
Jacob Sallade Esq^r
Surveyor General

IN TESTIMONY that the above is a copy of the original remaining on file in the Department of Internal Affairs of Pennsylvania, made conformably to an Act of Assembly approved the 16th day of February, 1833, I have hereunto set my Hand and caused the Seal of said Department to be affixed at Harrisburg, this sixteenth day of April 1906

Lea P. Brown
Secretary of Internal Affairs.